

Tuscany 02

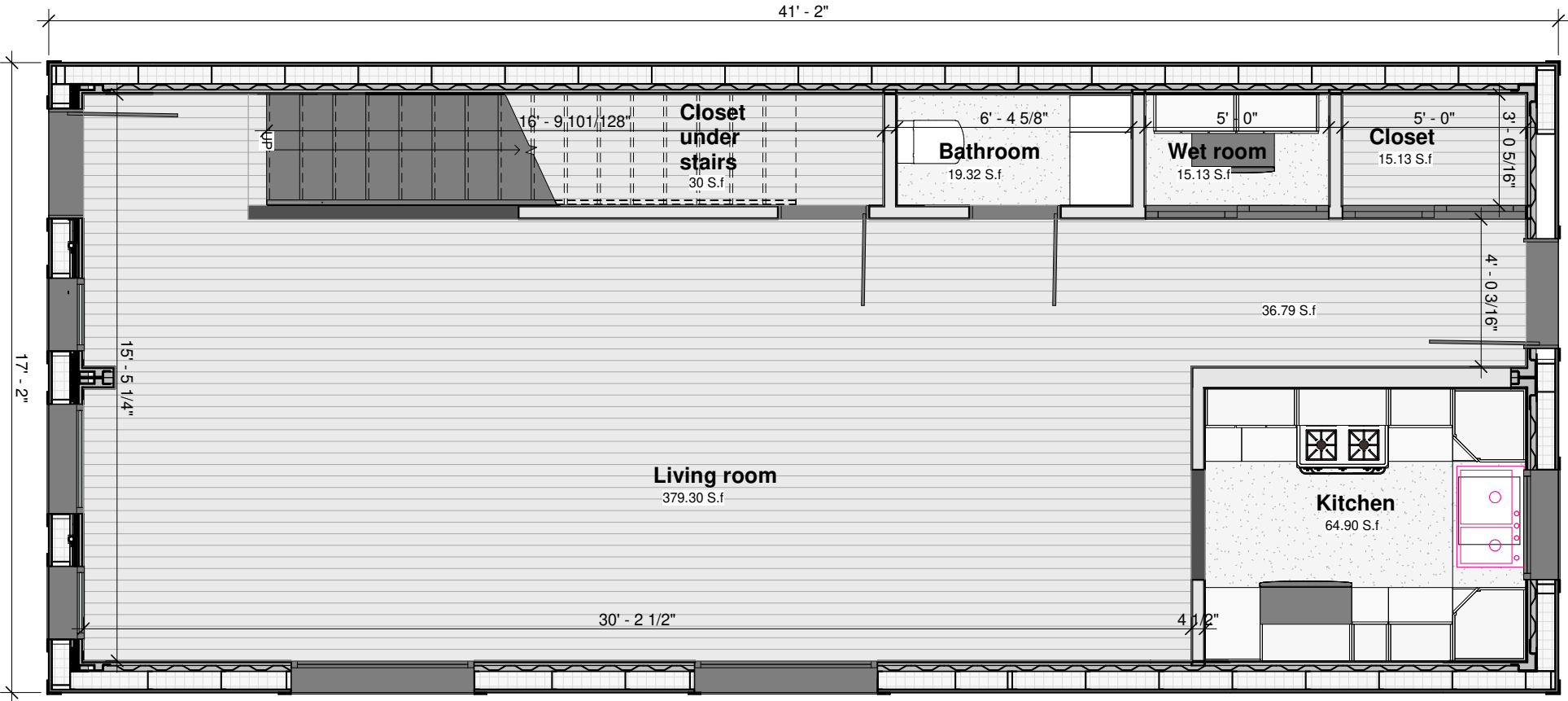
1420.32 S.f



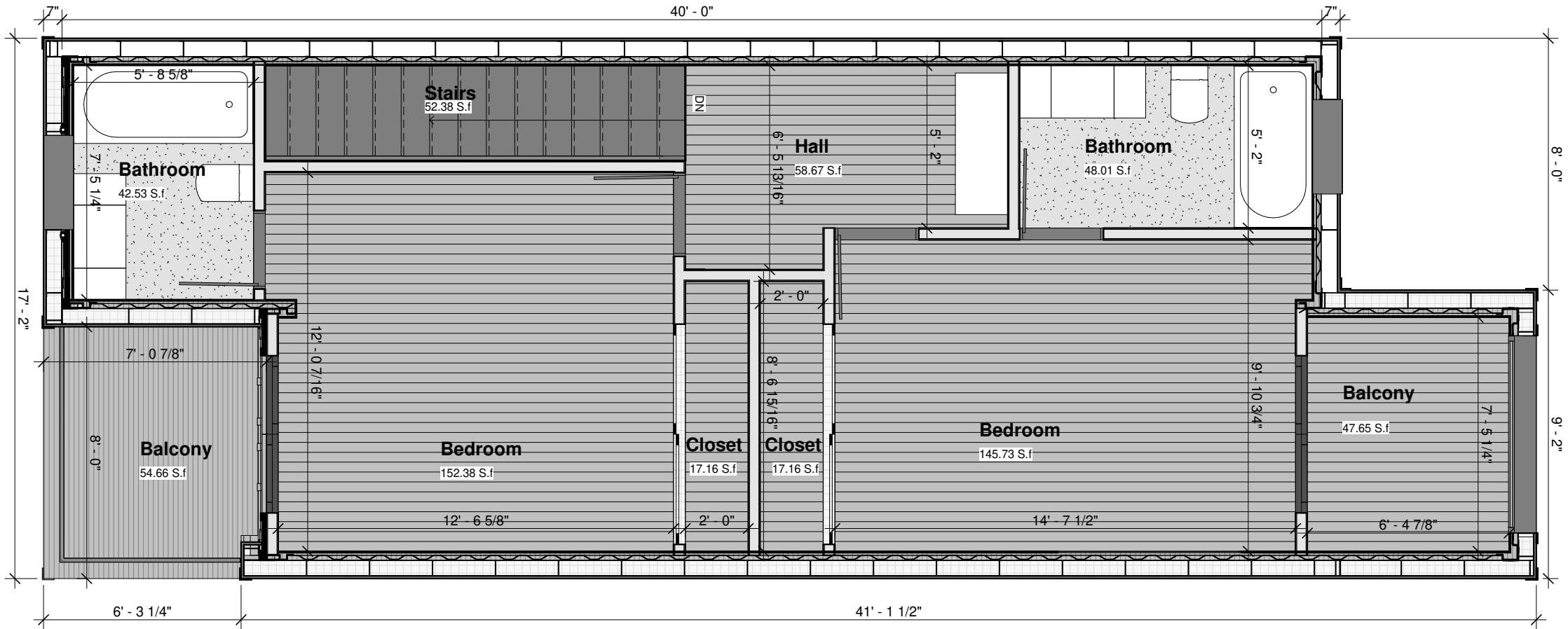
ONCALDERA
AFFORDABLE HOUSING SOLUTIONS

First floor

706.69 S.f



Second floor 713.63 S.f



Sections and elevations



Interior views



Interior views



Kitchen and bathroom



Adding a unit to your existing property is easy.
Our shipping container-based structures are stylish, eco-friendly, affordable, durable, and can be delivered anywhere.

FEATURES:

- Durable Corten steel framing
- Fire and earthquake resistant
- Ductless mini-split HVAC
- Energy efficient LED lighting
- Stove and built in microwave
- Super insulated, energy efficient
- Solar option

- Steel roof with +40yr warranty
- Rot, Mold, Mildew, and Insect resistant
- Tub/Shower, Toilet, Sink, Faucets and all fixtures
- Tile, Wood or carpet flooring
- Washer/dryer combo
- Meets international IBC construction standards

Ready to move in